

StarLight Full HD 1080P AHD Bullet Camera

SG-98AHD-RFA

STARVIS

- Full HD 1920x1080P@25/30fps
- 1/3" Sony 2.0M STARVIS CMOS Sensor
- Color:0.02Lux@F1.6, B/W:0.005Lux@F1.6, IR ON:0Lux@F1.6
- Simultaneous Video output: AHD / Composite BNC
- OSD / CoC (Via the coax)
- Fog Reduction & Noise Reduction & Sense Up Functions
- Shutter Mode (AUTO / MANUAL)
- Mechanical IR Cut Filter (ICR)

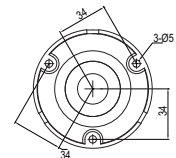
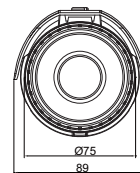
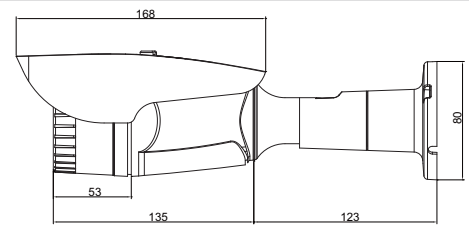


Video	Image Sensor	1/3" Sony 2.0M STARVIS CMOS Sensor
	Video Frame Rate (Maximum)	1920x1080p@25/30fps, 1280x720p@30fps
	Minimum Illumination	Color:0.02Lux@F1.6, B/W:0.005Lux@F1.6, IR ON:0Lux@F1.6
	Wide Dynamic Range	120dB
	Video Output	BNC connector (AHD) & Composite Simultaneous ; Composite is disable when WDR ON
	Mechanical IR Cut Filter (ICR)	Yes
	IR LED ; Working Distance	30 units ; 25~35m
	Audio	---
Function	OSD Menu	OSD / CoC(Disabled in PoC models)
	Day&Night Mode	Color / B&W / Auto / External
	Auto Electronic Shutter	1/25(30)~1/30,000 sec ; Flickerless
	Manual Electronic Shutter	1/25(30), 1/50(60), 1/100(120), 1/240, 1/500, 1/1000, 1/2000, 1/4000, 1/8000, 1/16000, 1/30000 sec
	White Balance	ATW / AWB / PWB(Push Lock) / Manual
	WDR;BLC;HLC	HIGH (Max 120dB) / MIDDLE / LOW / OFF ; Program ; ON/OFF
	Fog Reduction	Auto/Manual/Off ; Level: High / Middle / Low
	Dynamic Noise Reduction	HIGH / MIDDLE / LOW / OFF
	Sense Up	ON (x2,x4,x8,x16,x32) / OFF
	Language	ENGLISH, JAPANESE, TRADITIONAL CHINESE, SIMPLIFIED CHINESE
	E-Zoom	1.0x~8.0x (step 0.1)
	Image Setting	SHARPNESS / MIRROR / FLIP
	Privacy Zone Mask	18 Zones Programmable
	Motion Detection	ON:Sensitivity, Area Program/Off
	Lens Shading Compensation	ON/OFF
General	Automatic IRIS ; Connector	DC
	Lens Adapter	Built-in Varifocal Lens
	Lens	f2.8~12mm
	Lens Option	---
	Water Resistance	IP66
	Max. Breaking Strength	---
	Power Supply ; Consumption	12Vdc:7.2W;12Vdc/24Vac:8.2W, PoC (Option)
	Operation ; Storage Temp.	-10° C~50° C ; -20° C~60° C
	Operation ; Storage Humidity	Maximum:RH80% ; RH90%
	Dimensions	89(DIA)x168mm
	Net weight	700g



Dimensions

Tol:±0.5 Unit:mm



Bracket Options

Accessories

*Specifications are subject to change without notice. _13S1_320076880